



Starfin™/Duofin™ Installation Instructions

INSTALLING STARCONN™ FITTINGS

1. Spray all o-rings on the STARCONN™ fitting with silicone spray.
2. Push the STARCONN™ fitting into one end of the Starfin™/Duofin™ heat-pipe, turning the fitting as you push. Be careful not force or damage the o-ring.
3. Repeat step 4 for the other section of Starfin™/Duofin™ being connected.
4. Using two Tek screws and a Starstrap™, connect the two sections of Starfin™/Duofin™ together on both the top and bottom fins.

INSTALLING STARBARB™ FITTINGS

1. Spray all o-rings on the STARBARB™ fitting with silicone spray.
2. Push the STARBARB™ fitting into the end/center of the Starfin™/Duofin™ tube, turning the fitting as you push. Using a Barblock Bracket and two Tek screws, connect the Barblock Bracket to the top and bottom fins.

HANGING STARFIN HEAT-PIPE

BENCHES

The Starfin™/Duofin™ heat-pipe should be suspended 15-18" from the bottom of each bench with #14 jack chain (or comparable). The chain should connect to the Starfin™/Duofin™ at the end of each pipe, and attached to the bench at the most convenient place (usually the bottom of the cross member). A hole will need to be drilled into the top fin to accommodate an open link on the chain.

PERIMETER

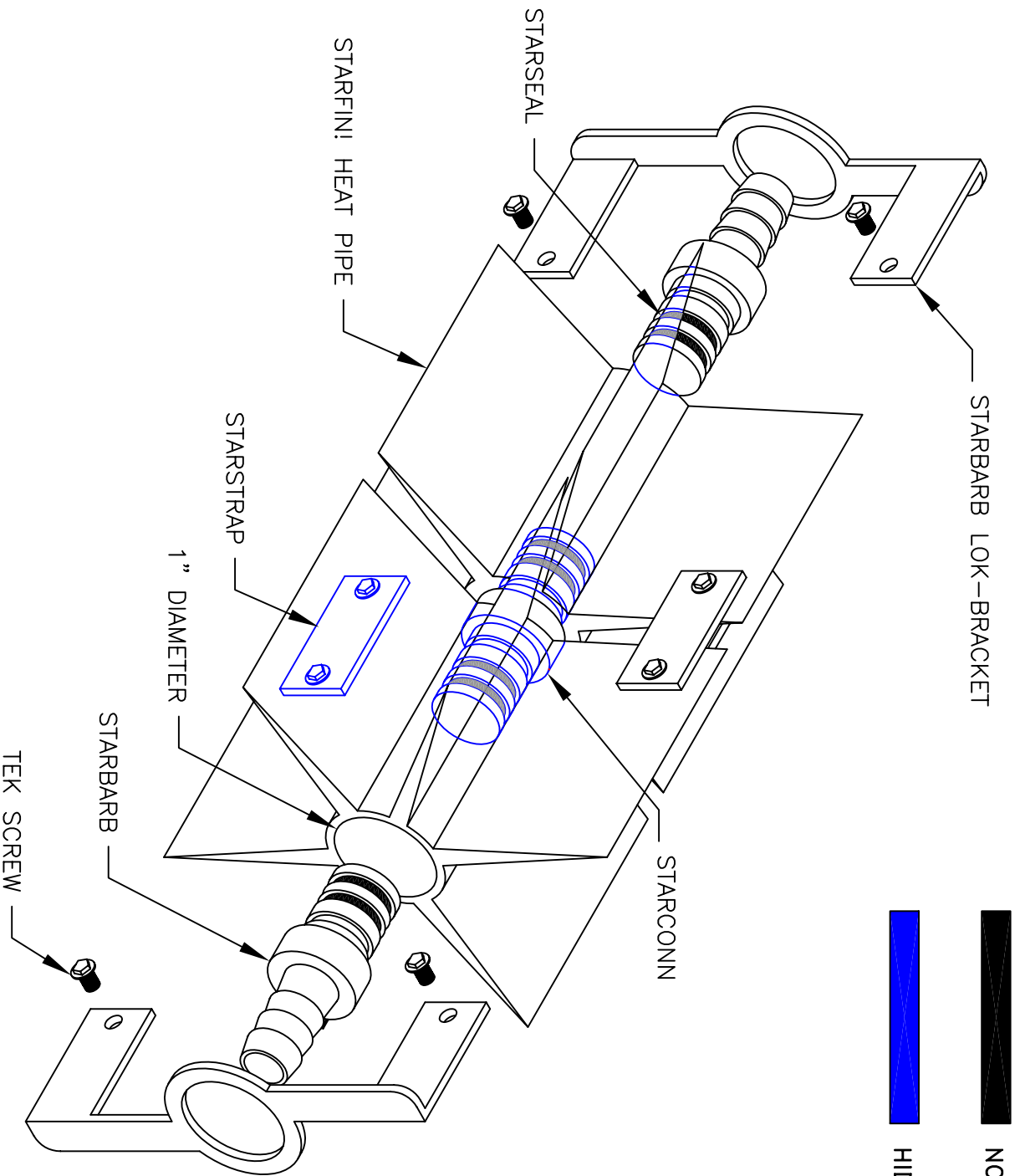
The Starfin™/Duofin™ heat-pipe should be suspended 15-18" from the ground with #14 jack chain (or comparable). The chain should connect to the Starfin™/Duofin™ at the end of each pipe, and attached to the wall at the most convenient place (usually the wall girt). A hole will need to be drilled into the top fin to accommodate an open link on the chain.

Refer to the Starfin™/Duofin™ water maintenance bulletin for the proper method of protecting your system.



THE STAR/DUO SYSTEM

STAR_SYS1



NOT HIDDEN

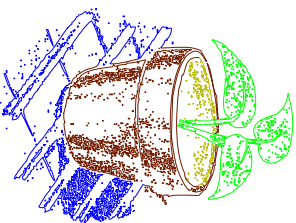
HIDDEN LINES



TrueLeaf®

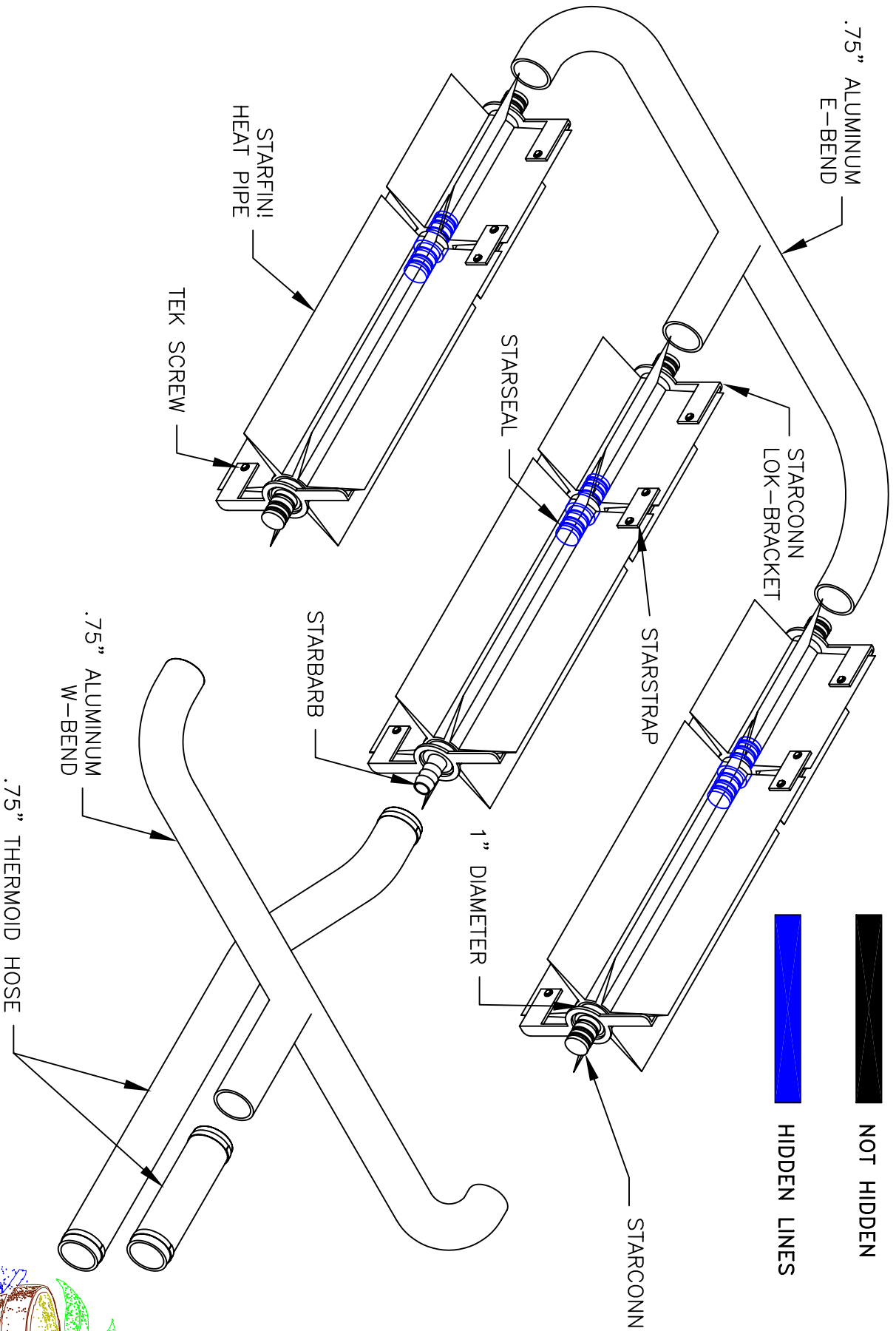
WE HEAT IT,
WE WATER IT,
WE CONTROL IT.

PO Box 750967, Petaluma, CA 94975 Phone: (707) 794-9660 Fax: (707) 794-9663
Date: 06/05/2003 Drawn By: DEWEY File Name: Star_Sys.dwg Copyright © TrueLeaf Technologies. All rights reserved.



THE STAR/DUO SYSTEM

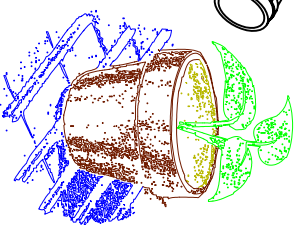
STAR_SYS2



TrueLeaf®

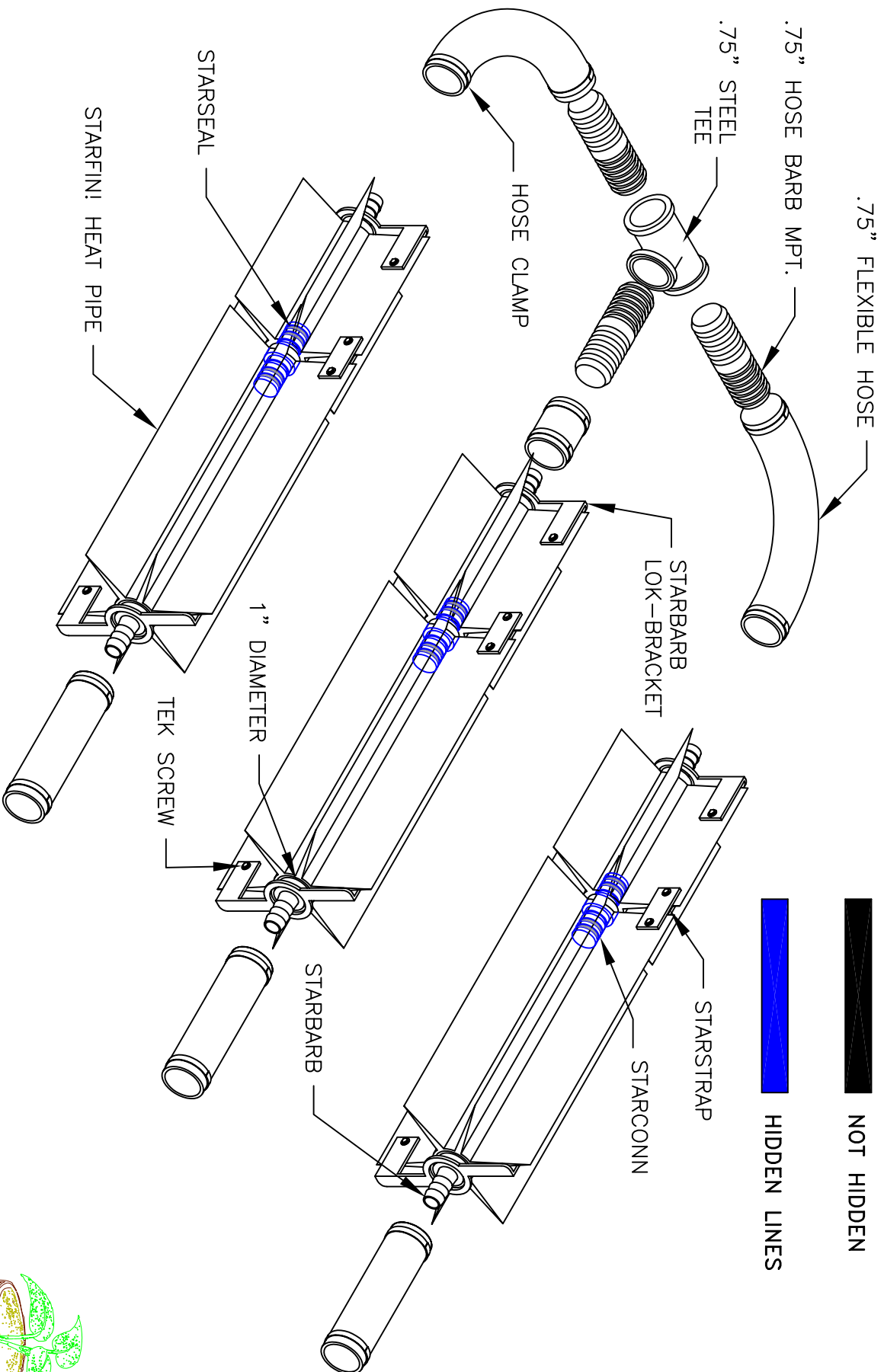
WE HEAT IT,
WE WATER IT,
WE CONTROL IT.

PO Box 750967, Petaluma, CA 94975 Phone: (707) 794-9660 Fax: (707) 794-9663
 Date: 06/05/2003 Drawn By: DEWEY File Name: Star_Sys.dwg Copyright © Trueleaf Technologies. All rights reserved.



THE STAR/DUO SYSTEM

STAR_SYS3



NOT HIDDEN

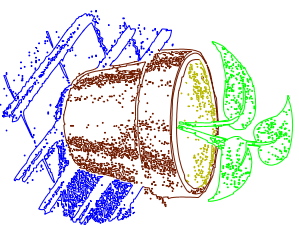
HIDDEN LINES



TrueLeaf®

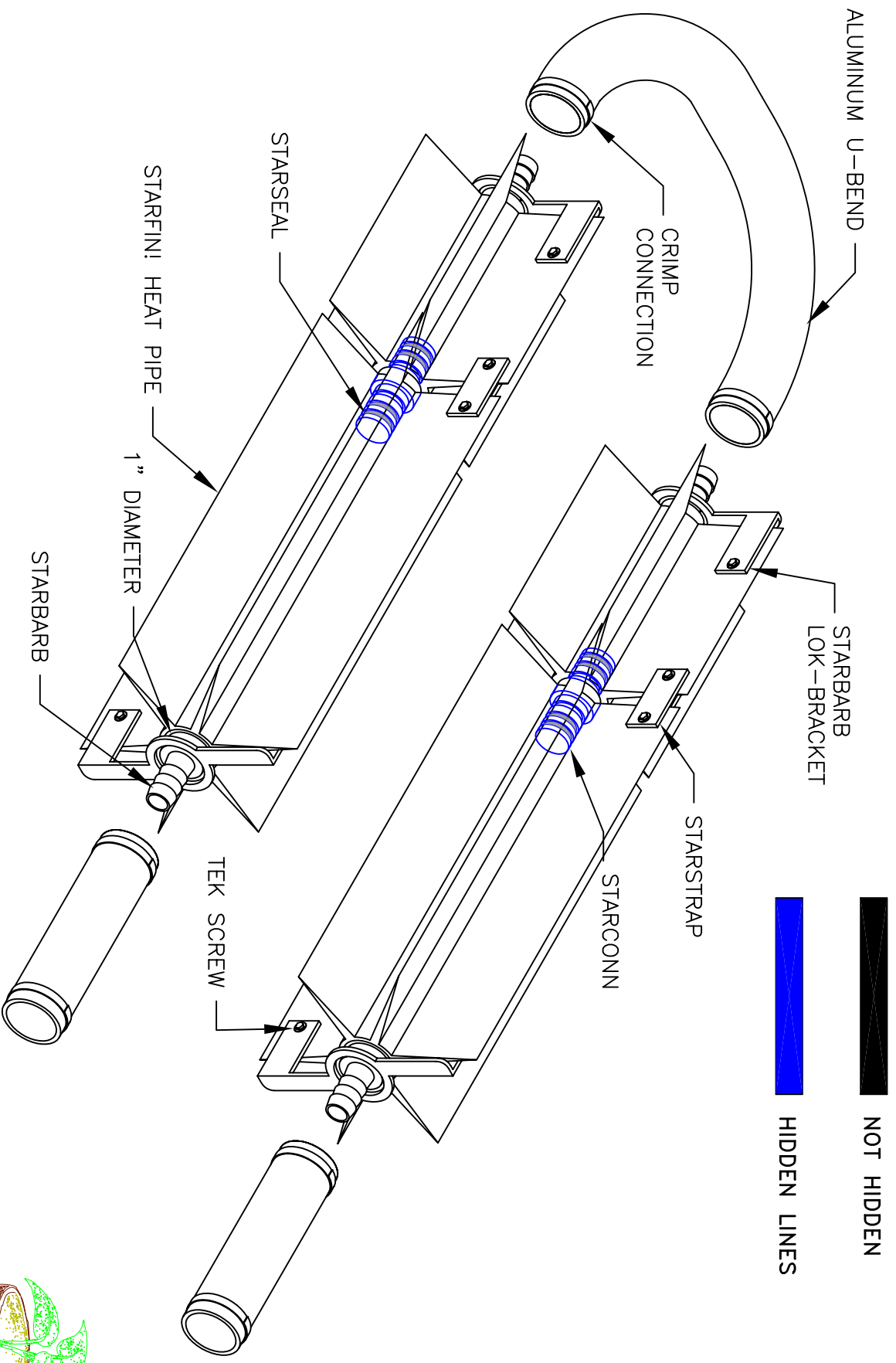
WE HEAT IT,
WE WATER IT,
WE CONTROL IT.

PO Box 750967, Petaluma, CA 94975 Phone: (707) 794-9660 Fax: (707) 794-9663
 Date: 00/00/00 Drawn By: Initials File Name: File Name Copyright © TrueLeaf Technologies. All rights reserved.



THE STAR/DUO SYSTEM

STAR_SYS4



TrueLeaf®

WE HEAT IT,
WE WATER IT,
WE CONTROL IT.

PO Box 750967, Petaluma, CA 94975 Phone: (707) 794-9660 Fax: (707) 794-9663
Date: 06/05/2003 Drawn By: DEWEY File Name: Star_Sys.dwg Copyright © TrueLeaf Technologies. All rights reserved.

