



Water Maintenance for Starfin™/Duofin™ Heating Systems

Congratulations on the purchase of a Starfin™ or Duofin™ heating system! Starfin™ and Duofin™ are the most efficient aluminum heating systems on the market today. **To keep your system running at peak performance and ensure its longevity, it is imperative that the system water be treated and maintained at all times.**

With your system we have supplied you* with a full water treatment program consisting of AMSOLVE water treatment, the appropriate water testing kits, and in some cases a by-pass feeder for easily adding treatment to the system.

Adding Treatment

As soon as your Starfin™/Duofin™ has been installed, and the system has been checked for leaks and bled of air, water treatment **must** be added immediately. Damage can occur to your system in the **first days** of operation if the aluminum is not protected from suspended oxygen in the water.

Water treatment should be added at a rate of 1 gallon of treatment for every 400 gallons of system water using AMSOLV CW351K.

Water treatment can be added to the system using the by-pass feeder, or funneled into the system at the highest point. Once the proper amount of treatment has been added to the system, open all zone valves, and turn on all pumps. (It is not necessary to run the heaters.) Circulate the system water for a minimum of 30 minutes.

If you purchased Starfin™ or Duofin™ from us without purchasing water treatment, please contact your local TrueLeaf dealer or call 800-438-4328.

Star-Duo Water Maint.doc 3/04

Monitoring Performance

Using the water test kit(s), draw a water sample from the system and check the nitrite and molybdenum levels (directions are provided with each the test kit). The exact treatment levels must be maintained according to instructions provided with each kit and checked monthly. Add more water treatment if needed. If you have to continuously add treatment to maintain the proper treatment level, you have a leak. Inspect the entire system and repair any leaks. The more fresh water brought into the system, the less effective the water treatment is.

To monitor levels of aluminum corrosion, we recommend that a Starfin™/Duofin™ corrosion monitoring system be added to the plumbing or, at the very least, randomly check the inside of your Starfin™/Duofin™ every few months. (See diagram on back.)

Note: It is imperative that these procedures are followed, otherwise system failure may result.

Remember, preventative water maintenance keeps your system operating at maximum efficiency and eliminates system down-time and costly repairs.

If you have any questions regarding the implementation and monitoring of our water treatment program, please feel free to call:

 **1-800-438-4328**



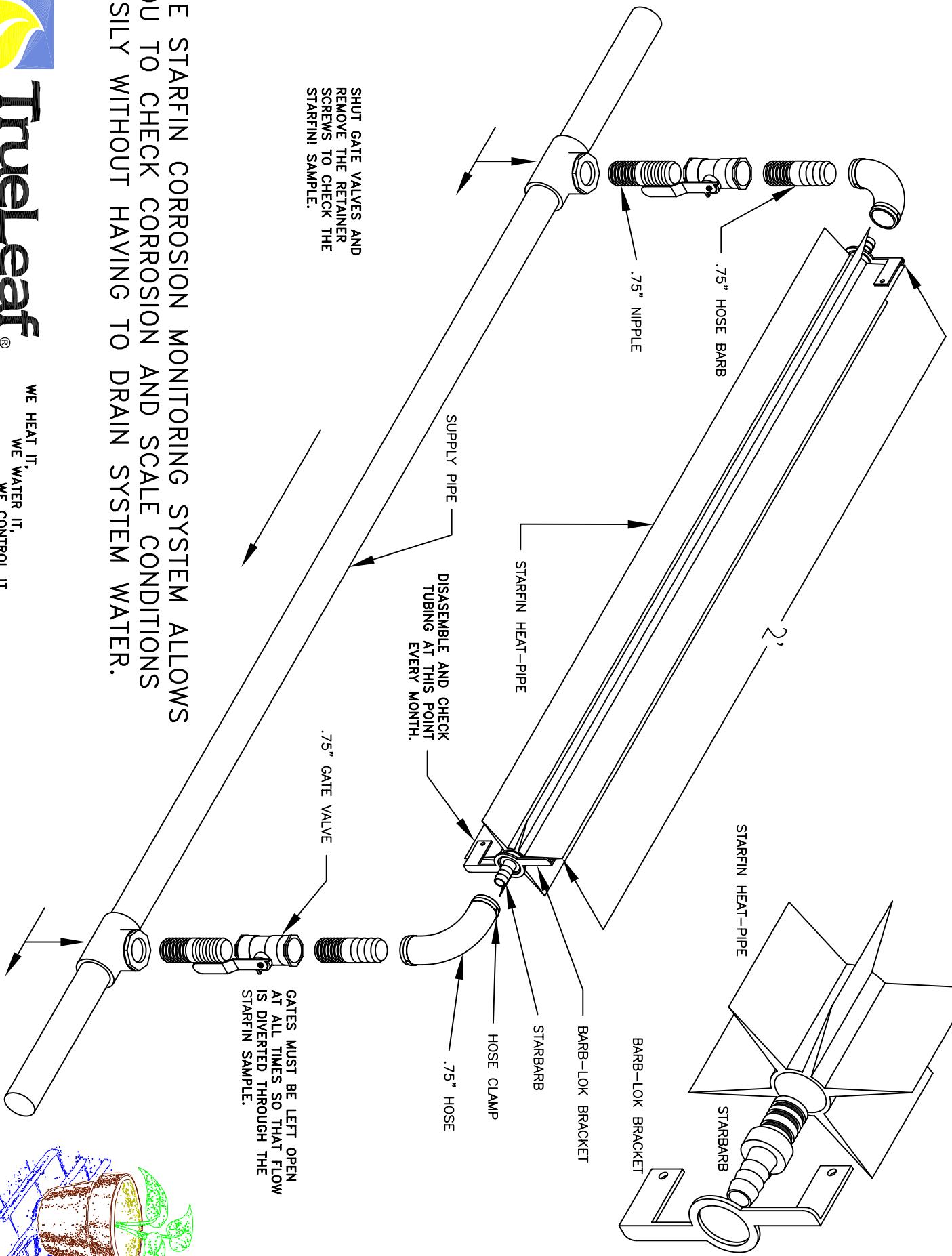
TrueLeaf Technologies
PO Box 750967
Petaluma, CA 94975 USA

1-800-438-4328
1-707-794-9660
1-707-794-9663 fax

info@trueleaf.net
www.trueleaf.net

STARFIN CORROSION MONITORING SYSTEM

S1



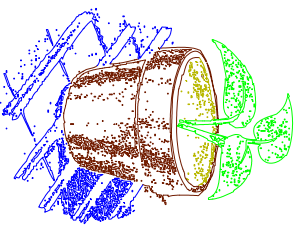
SHUT GATE VALVES AND REMOVE THE RETAINER SCREWS TO CHECK THE STARFIN SAMPLE.

GATES MUST BE LEFT OPEN AT ALL TIMES SO THAT FLOW IS DIVERTED THROUGH THE STARFIN SAMPLE.

THE STARFIN CORROSION MONITORING SYSTEM ALLOWS YOU TO CHECK CORROSION AND SCALE CONDITIONS EASILY WITHOUT HAVING TO DRAIN SYSTEM WATER.



WE HEAT IT,
WE WATER IT,
WE CONTROL IT.



PO Box 750967, Petaluma, CA 94975 Phone: (707) 794-9660 Fax: (707) 794-9663
 Date: 04/09/2003 Drawn By: DEWEY File Name: Corr...System.dwg Copyright © Trueleaf Technologies. All rights reserved.